

TWILIGHT COMFORT



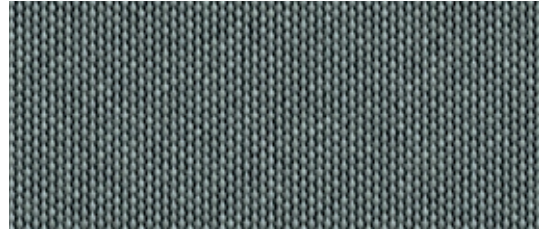
262

TWILIGHT COMFORT

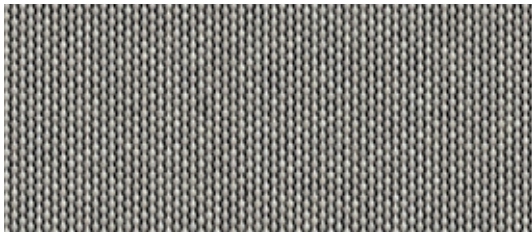
PVC
FREE



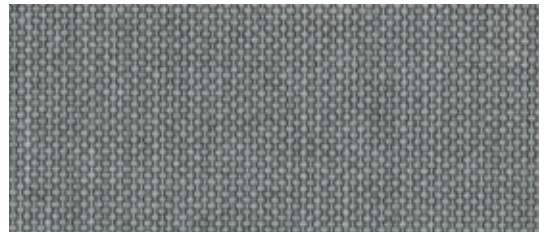
262 154 BLACK



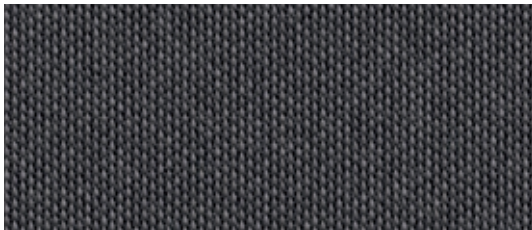
262 621 CEMENT



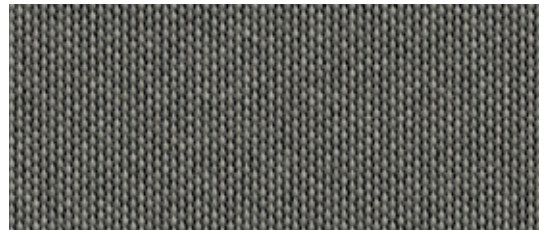
262 721 PLATINUM



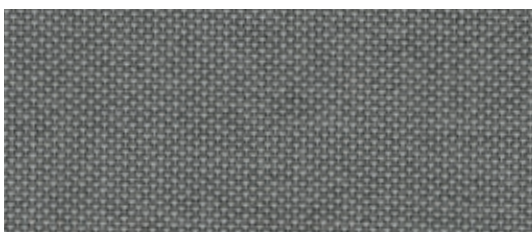
262 802 SMOKE



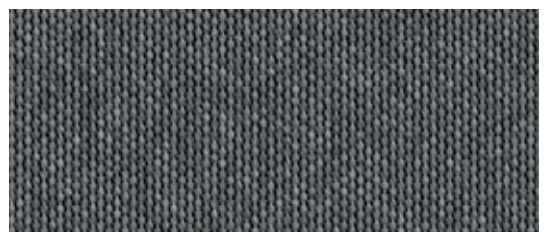
262 815 SLATE



262 810 TAUPE



262 830 STEEL



262 814 GRAPHITE

Strahlungsphysikalische Parameter und Leistungsbeurteilung nach / Physical radiation parameter and performance appraisal to / Paramètres physiques de rayonnement et évaluation de la performance selon / Fysieke stralingsparameter en prestatiebeoordeling om / Parametri fisico-chimici d'irradiazione valutazione della prestazione secondo la norma DIN EN 14501						
	T _v %	T _s %	R _s %	A _s %	G _{tot}	OF %
262 154 BLACK	4,5	4,60	2,60	92,80	0,07	4
262 621 CEMENT	9,2	13,70	23,20	63,10	0,12	
262 721 PLATINUM	11,0	13,00	25,10	61,90	0,12	
262 802 SMOKE	12,2	12,60	16,90	70,50	0,11	
262 810 TAUPE	6,3	10,70	22,80	66,50	0,10	
262 814 GRAPHITE	8,6	8,80	10,20	81,00	0,09	
262 815 SLATE	7,0	7,60	9,70	82,70	0,09	
262 830 STEEL	6,6	7,20	14,70	78,10	0,08	

T_v Lichttransmissionsgrad / Light transmission degree / Degré de transmission de lumière visible / Lichttransmissie graad / Grado di trasmissione della luce visibile

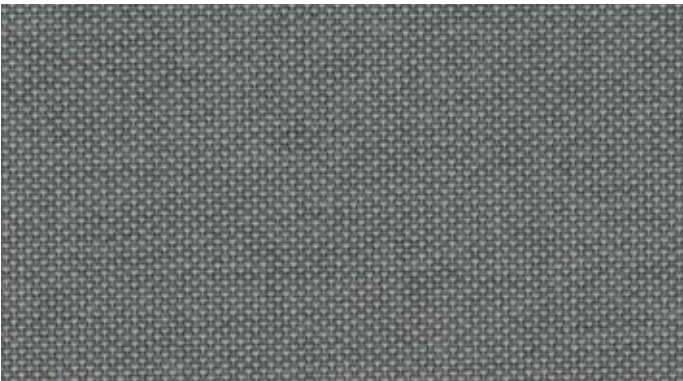
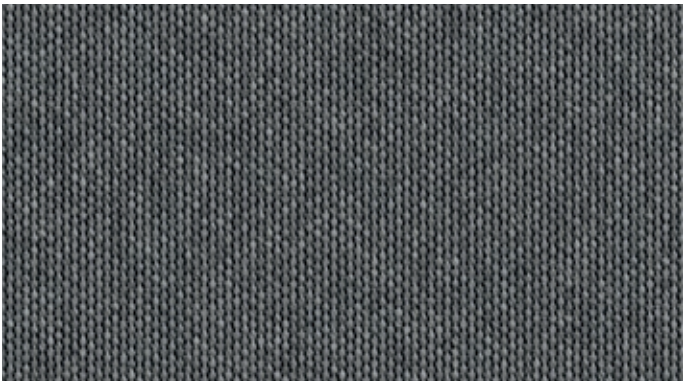
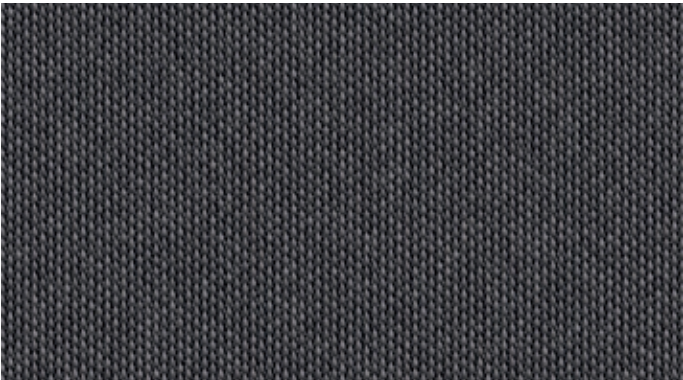
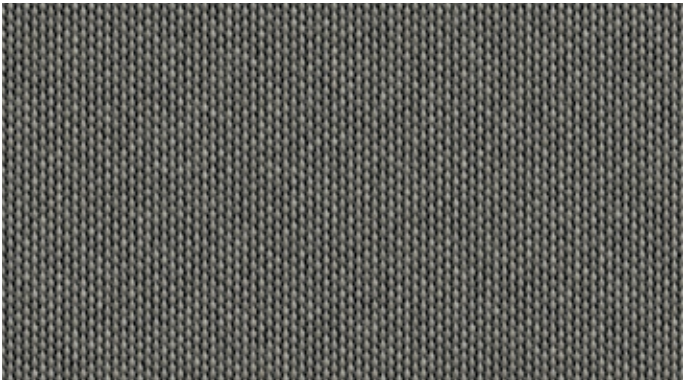
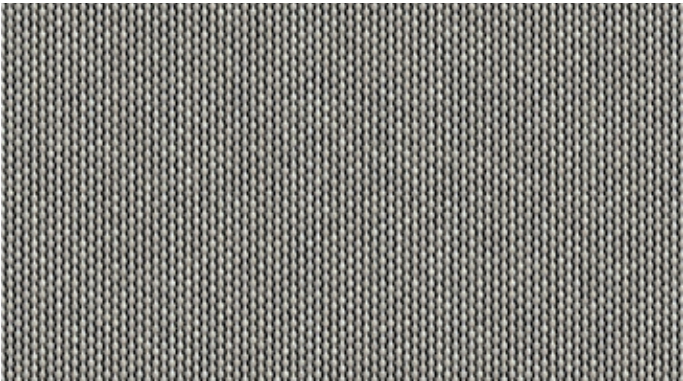
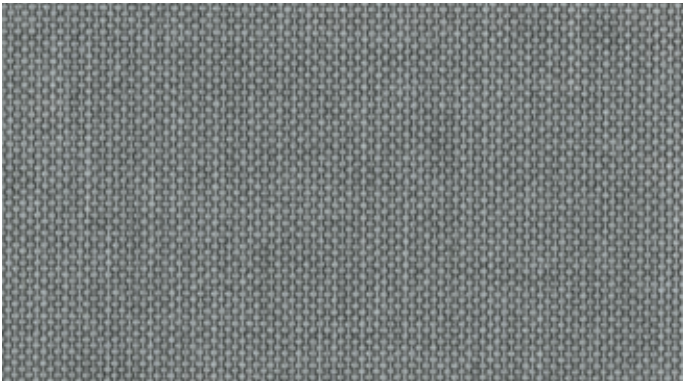
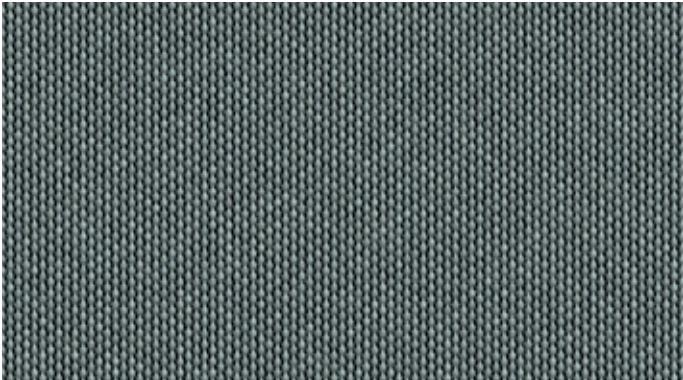
T_s Strahlungstransmissionsgrad / Solar transmittance / Degré de transmission des rayons / Zonnetransmissie / Grado di trasmissione raggi

R_s Strahlungsreflexionsgrad / Solar reflectance / Degré de réflexion des rayons / Zonnereflectie / Grado di riflessione della radiazione

A_s Strahlungsabsorptionsgrad / Solar absorptance / Degré d'absorption des rayons / Zonneabsorptie / Grado di assorbimento della radiazione

G_{tot} Gesamtenergiedurchlassgrad / Total energy transmittance / Transmission d'énergie totale / Totale energiedoorgang / Trasmissione di energia totale (DIN EN ISO 52022-3)

OF Openness faktor





FACTS









262 TWILIGHT COMFORT



REINIGUNG & PFLEGE
Cleaning & Care
Nettoyage & Entretien
Reinigung & Verzorging
Pulizia & Cura



ZEICHENERKLÄRUNG
Explanation of symbols
Explication des symboles
Verklaring van symbolen
Spiegazione dei simboli

Anwendungen / Applications / Applications / Toepassingen / Applicazione				
	Special fabric construction PAN/PES	DIN 60 001		
	235 g /m ²	DIN EN 12127		
	Note: 90	EN ISO 4920		
	160 daN / 5 cm	DIN EN ISO 13934-1		
	70 daN / 5 cm	DIN EN ISO 13934-1		
	 min. 7/8	DIN EN ISO 105-B04		
	300 cm			
	min. 7	DIN EN ISO 105-B02		

Hinweis: Änderungen die dem technischen Fortschritt dienen, behalten wir uns vor. Werte ohne Toleranzangaben sind Nennwerte mit einer Toleranz von ±5%. Die Angaben entsprechen unserem heutigen Kenntnisstand und sollen ohne Rechtsverbindlichkeit informieren. • Note: Subject to change in view of technical upgrades. Values indicated without tolerance levels are nominal values with a tolerance range of ±5%. All data presented here is given to the best of our current knowledge for guidance purposes and is not legally binding. • Remarque: Sous réserve de toute modification dans le cadre d' améliorations techniques. Les valeurs mentionnées sans tolérance sont des valeurs nominales avec une tolérance de ±5%. Les indications correspondent à notre savoir actuel et sont données à titre informatif sans obligation juridique. • Opmerking: wijzigingen voorbehouden in verband met technische upgrades. Waarden aangegeven zonder tolerantieniveaus zijn nominale waarden met een tolerantiebereik van ±5%. Alle gegevens die hier worden gepresenteerd, zijn naar ons beste huidige kennis gegeven voor begeleidingsdoeleinden en zijn niet juridisch bindend. • Avvertenza: Il produttore si riserva di apportare modifiche per il miglioramento tecnico del prodotto. I valori privi di tolleranza sono da intendersi come valori nominali con una tolleranza di ±5%. Tutti i dati corrispondono allo stato attuale delle nostre conoscenze; le informazioni fornite non sono legalmente vincolanti.

SPECIAL FEATURES

	PVC frei / PVC-free / Sans PVC / PVC-vrij / senza PVC		Durchsicht / Transparency / Transparence / Transparantie / Trasparenza
	Wasser- und schmutzabweisend / Water and dirt repellent / Hydrofuge et anti-salissures / Water- en vuilafstotend / Idrorepellente e antisporca		Lichtbeständig / Fade resistant / Résistant à la décoloration / Bestand tegen vervagen / Resistente allo sbiadimento